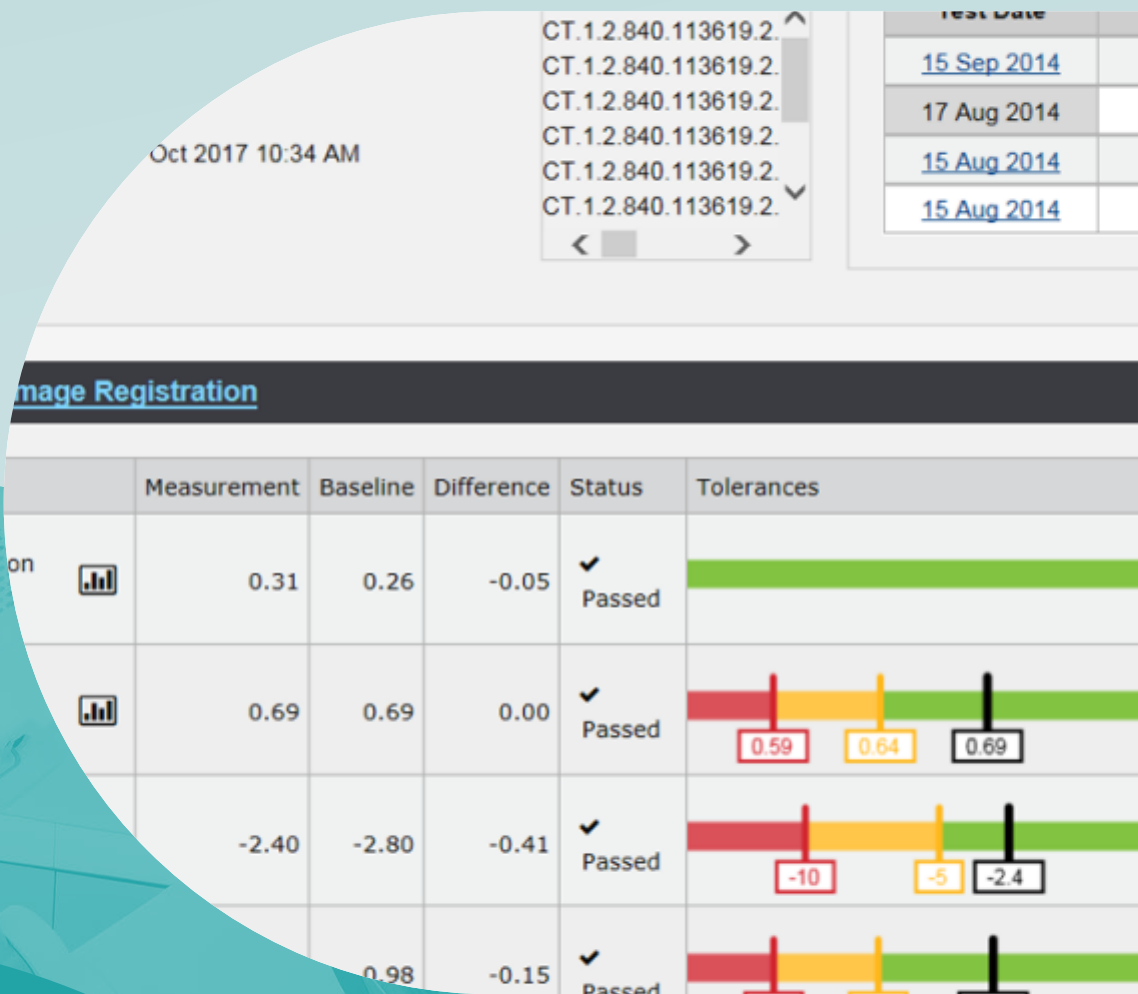


# ANALYSIS SOFTWARE



# Table of contents

<b>Bertin Technologies</b> .....	<b>3</b>
Dataexpert Software Solution – Saphymo .....	4
<b>Sun Nuclear Corporation</b> .....	<b>4</b>
RapidCHECK™ – Sun Nuclear .....	6
3DVH Software for Patient QA – Sun Nuclear .....	7
<b>Ashland</b> .....	<b>7</b>
FilmQA Pro™ Software version 7 – Ashland .....	9



Bertin Technologies is a global provider of advanced radiation detection and environmental monitoring solutions, specializing in handheld monitors, personal electronic dosimeters, environmental monitoring systems, and waste & recycling management technologies. Their instruments are designed to meet the rigorous demands of nuclear facilities, emergency response teams, and environmental agencies.

## Product offering

### Dataexpert Software Solution - Saphymo



## Dataexpert Software Solution - Saphymo



DataEXPERT software is a solution you can use to collect, manage, chart and evaluate data measured by sensors from Bertin Instruments for example. DataEXPERT is a very user-friendly solution that offers a powerful web-based interface available, not only on computers and laptops, but also for mobile use on tablets and smartphones.

The software shows the data in charts or tables, and with static or dynamic GIS map layers, so the data is easy to analyse. DataEXPERT eases the system management because it shows all technical and radiological events of the connected probes. The users have access to the system overview, and they can also adjust all instruments parameters with remote setup functions.

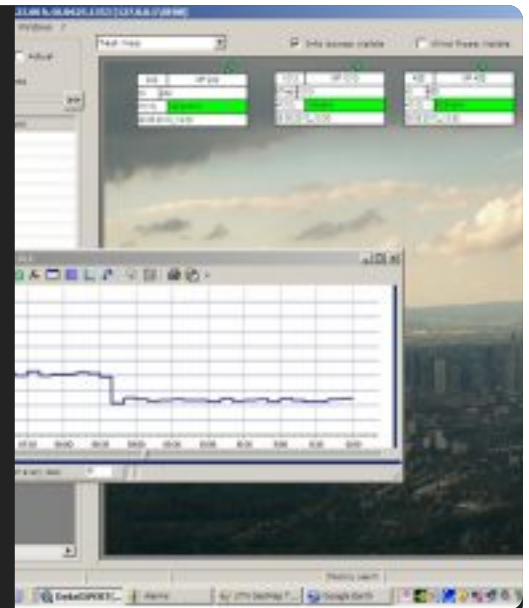
You can combine this software perfectly with [Bertin's GammaTRACER](#) probes for example.



### DATAEXPERT SOFTWARE BENEFITS

- Can also import and display data from DVD-files (older data can be imported)
- Select data from different tools or measurement series in the database and display it
- Use alarm, zoom, display, mathematics and report functions
- Easily exportable data to Excel or SQL databases
- Use a display module like GEOMAP or Google Earth
- User friendly
- Compatible with Windows

Do you want to read more about the possibilities, visit [our partner's website!](#)





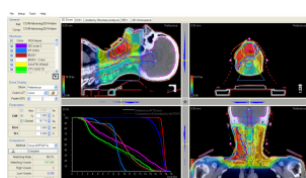
Sun Nuclear is a leading provider of comprehensive Quality Management solutions for radiation therapy and diagnostic imaging. Their portfolio encompasses positioning systems, dosimetry tools, QA phantoms, detectors, dose rate monitoring devices, analysis software, and training phantoms. These solutions are designed to support medical professionals in ensuring accurate, safe, and efficient patient care.

## Product offering

### RapidCHECK™ - Sun Nuclear



### 3DVH Software for Patient QA - Sun Nuclear



## Diagnostic Imaging > Analysis software

# RapidCHECK™ – Sun Nuclear



RapidCHECK Diagnostic QA Software from Sun Nuclear is an automated, diagnostic QA software platform that brings together proven diagnostic QA phantoms and intuitive software for efficient and standardized diagnostic QA workflows.



## Automate Diagnostic QA

You can use RapidCHECK with your [CT ACR 464 Phantom](#) for faster analysis and an easily searchable permanent record and trending reports. But you can also use RapidCHECK with your [Advanced Electron Density Phantom](#) to automatically find and identify the material of each rod, and to streamline the CT-to-Electron Density table report.

## Browser-Based

Access RapidCHECK from any browser in your clinical network to simplify workflow regardless of clinic size.

RapidCHECK is the new diagnostic QA software platform from Gammex, a Sun Nuclear Company. This tool leverages the proven QA phantoms from Gammex and user-friendly software interface from Sun Nuclear to help you streamline your QA workflow and enhance quality and consistency. Whether you have one CT scanner, an entire fleet, or consult for dozens of different centers, RapidCHECK provides a framework for simplifying your clinical workflow. Software is installed locally and can be accessed from any browser within your clinical network.

## Computed Tomography Module

The first RapidCHECK module integrates with your Gammex CT ACR 464 Phantom. From slice thickness, to resolution, to uniformity—generate a complete report of your CT ACR 464 Phantom in seconds. Remove the subjectivity from your evaluations with RapidCHECK's evidence-based metrics.

## How it Works

Define a baseline with your initial scan. RapidCHECK suggests tolerance values based on ACR guidelines and the empirical measurements. With the baseline set, each scan is evaluated and scored against your defined tolerances, eliminating inter/intra-use variation.

## Trending and Historical Data

All images, analysis, trending and data are stored locally for fast and easy access. Configure reporting results to suit your needs. Easily review prior scans, analyze trends, and investigate anomalous results.

Combine RapidCHECK with the CT ACR 464 Phantom to automate CT image quality testing. Generate a complete report in seconds, with analysis of slice thickness, resolution, and uniformity. Built-in evidence-based metrics remove subjectivity from evaluations.

## 3DVH Software for Patient QA - Sun Nuclear



3DVH Software transforms the field of per-patient dose QA by generating clinically-relevant and intuitive analyses of complex IMRT and VMAT plans. With proven accuracy, 3DVH estimates the 3D dose to the patient-specific geometry.

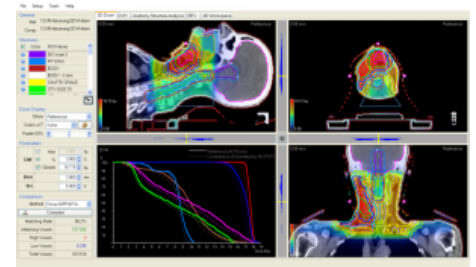
### 3DVH Software features:

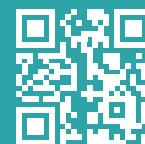
- fast results with automated tools – Quick Stat Templates,
- quick Dose Profiles, DICOM compliant workflow
- no forward dose calculation into the patient CT
- no commissioning
- uses existing measurements and devices
- with optional Respiratory MotionSim module, analyze the dosimetric impact of a moving target
- transform 2D measurements to 3D dose volume for advanced analysis
- perform 3D dose and DVH QA analysis on patient – not phantom – geometry
- supports coplanar and non-coplanar beams
- identify TPS and beam delivery errors
- intuitive and familiar presentation of dose and DVH with statistics per anatomical structure

### 3DVH Software compatibility:

- hardware: ArcCHECK, MapCHECK 2
- software: SNC Patien, EPIDose
- rotational therapy: RapidArc, VMAT
- static gantry: IMRT
- treatment planning systems: Pinnacle, Eclipse, and most TPS systems that can export DICOM data
- FFF & non-FFF deliveries

Read more about 3DVH Software on the [Sun Nuclear website](#)

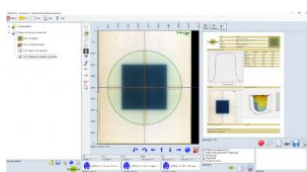




Ashland is a global leader in specialty materials, offering innovative solutions that enhance safety, precision, and patient outcomes across various medical disciplines. Their portfolio supports healthcare providers in radiation therapy, diagnostic imaging, wound care, and regenerative medicine.

## Product offering

### FilmQA Pro™ Software version 7 - Ashland

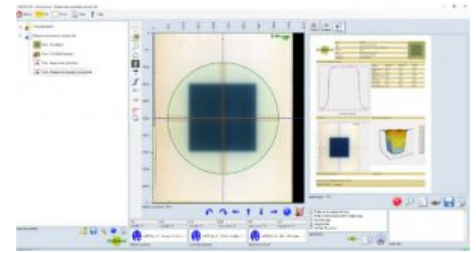






## **a sophisticated, quantitative analysis tool for Gafchromic™ Film**

FilmQA Pro™ software is a sophisticated, quantitative analysis tool specifically designed to simplify and streamline the intensity-modulated radiation therapy quality assurance (IMRT QA). Our software is also effective for QA of SRS, SBRT and VMAT procedures. It allows you to scan or open images of exposed film and calculate the optimized dose maps.



FilmQA Pro™ software uses proprietary multi-channel dosimetry which eliminates or mitigates film and scanner artifacts by detecting whether errors are being made during scanning. In addition,, the software also has the one-scan analysis feature which combines calibration and plan verification in a single scan. The one-scan protocol requires only the patient film, a reference patch, and an unexposed patch. This protocol eliminates error sources such as interscan variability, which enables you to reduce errors to within 2 percent.

With FilmQA Pro™ software, you can get your results in minutes, post-exposure growth no longer is an issue and there is no waiting overnight for changes in the film to diminish. You can do an analysis any time you want, even at a moment's notice. The software delivers gamma passing rates  $\geq 95$  percent at 2 percent at 2 mm instead of using 3 percent at 3 mm.

## **key features and benefits**

- lateral scan correction: apply a correction to compensation for lateral artifacts that can show in the scan
- new user friendly interface with a quick start menu
- one-scan protocol: fast and efficient method to achieve dose accuracy within 2%
- triple-channel dosimetry: use three color channels to optimize accuracy of dose calculations
- accurately calibrate: an entire lot with just four strips of film using our film-specific mathematical function
- quick-start screen: easily access the module you need at start-up
- dose error recognition: ability to identify accuracy of delivered dose
- superior resolution: get 100 percent of the picture from millions of measurements instead of just 0.1 percent
- no angular dependence: shoot the film from all angles, an entire plan on a single Gafchromic™ film, and validate the plan in the same way that the patient receives it

*FilmQA Pro™ Software carries a CE Mark*