

# DETECTORS



# Table of contents

<b>Spectrum Techniques</b>	<b>3</b>
SP78W – Sodium Iodide Well Detector Assembly	4
SD78W – Sodium Iodide well detector	5
SDA38 – Sodium Iodide Detector	6
GP35 – GM DETECTOR ASSEMBLY	7
GM35 – GM Detector	8
<b>Sun Nuclear Corporation</b>	<b>8</b>
Mammo Digital Compression Device – Sun Nuclear	10
Model MA5034 – Portable Blue / Green Sensitometer – Sun Nuclear	11
Model 330 – Digital kV, Dose and Time Meter – Sun Nuclear	12
<b>Polimaster</b>	<b>12</b>
RadFlash® Electronic Personal Dosimeter	14
<b>Other</b>	<b>14</b>
SPA38 – Sodium Iodide Detector Assembly	16

## Partner **Spectrum Techniques**

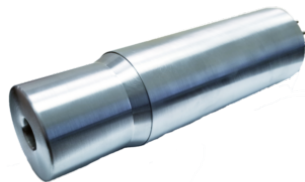
**Spectrum Techniques** Spectrum Techniques is a U.S.-based provider of radiation detection and measurement solutions, offering a comprehensive range of detectors, quality assurance (QA) sources, alpha, beta, and gamma spectrometry systems, as well as samplers and counters. Their products are designed to support educational institutions, research laboratories, and industrial applications requiring precise and reliable radiation measurements.

### Product offering

**SP78W - Sodium  
Iodide Well Detector  
Assembly**



**SD78W - Sodium  
Iodide well detector**



**SDA38 - Sodium  
Iodide Detector**



**GP35 - GM DETECTOR  
ASSEMBLY**



**GM35 - GM Detector**



[← Back to partner](#)

Nuclear Medicine › Detectors

## SP78W - Sodium Iodide Well Detector Assembly

The SP78W, complete scintillation well detector assembly includes our SD78W, NaI(Tl) scintillation well detector, TS78-1 or 2 vertical stand, and lead shield.



## SD78W - Sodium Iodide well detector

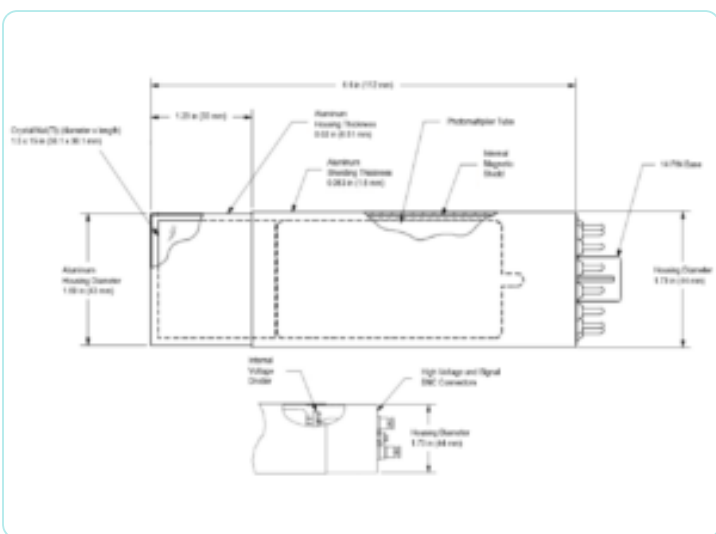
The SD78W, sodium iodide (NaI) well scintillator is primarily used for gamma ray assay and wipe test analysis. The SD78W is a positive high voltage detector employing a 1.75 in. x 2 in. (44.5 mm x 50.8 mm – diameter x thickness) NaI(Tl) cylindrical scintillation crystal with a 0.7 in. x 1.5 in (17.8 mm x 38.1 mm) well.



## SDA38 - Sodium Iodide Detector

The SDA38 Sodium Iodide Scintillation Detector features a 1.5 x 1.5 inch NaI(Tl) crystal in an aluminum housing, including a photomultiplier tube, an internal magnetic shield, and high voltage and signal BNC connectors.

Cables not included.



## GP35 - GM DETECTOR ASSEMBLY

The GP35, complete GM detector assembly includes our GM35, end-window, Geiger-Mueller detector, 3 ft BNC cable, 10 position sample stand, and sample tray.

The detector stand is manufactured from a rugged plastic and has 10 sample tray positions placed 1 cm apart for convenience.

The sample tray has a 1 inch diameter indentation which keeps the sample secure and centered directly under the GM detector. This is perfect for our holding our exempt quantity radioactive sources.



[← Back to partner](#)

Nuclear Medicine > Detectors

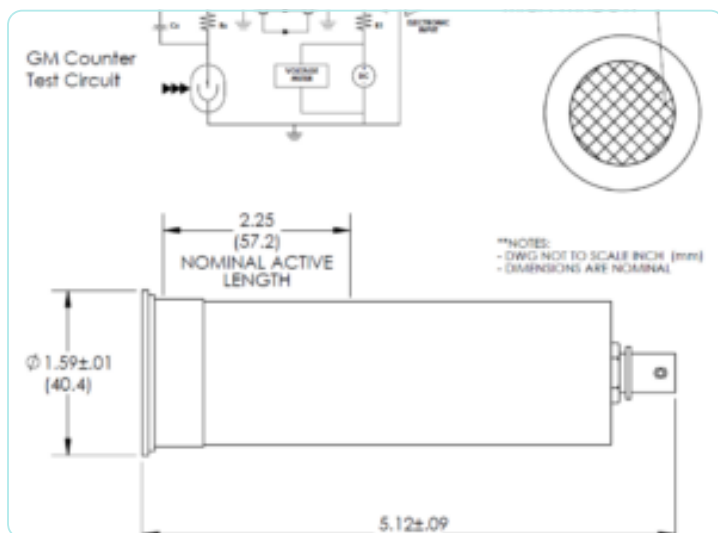
## GM35 - GM Detector

The GM35, end-window, Geiger-Mueller detector will detect alpha, beta, and gamma radiation.



The thin mica window is protected by a thin steel screen that can be removed. The GM35 detector operates at the manufacturer recommended 900 V.

Cable not included.





## Partner **Sun Nuclear Corporation**



Sun Nuclear is a leading provider of comprehensive Quality Management solutions for radiation therapy and diagnostic imaging. Their portfolio encompasses positioning systems, dosimetry tools, QA phantoms, detectors, dose rate monitoring devices, analysis software, and training phantoms. These solutions are designed to support medical professionals in ensuring accurate, safe, and efficient patient care.

### Product offering

**Mammo Digital  
Compression Device -  
Sun Nuclear**



**Model MA5034 -  
Portable Blue / Green  
Sensitometer - Sun  
Nuclear**



**Model 330 - Digital  
kV, Dose and Time  
Meter - Sun Nuclear**



## Mammo Digital Compression Device - Sun Nuclear

The Mammo Digital Compression Device measures compression force to assure accuracy and reproducibility.

The device has a removable display panel that supports prone and standard mammo systems, with compression force up to 34 kg. It also has a backlit LCD screen that displays the force, with continuous monitoring for time study. The screen can display the force in standard, or in metric units.



### MAMMO DIGITAL COMPRESSION DEVICE FEATURES

- Removable display pannel
- Backlit LCD screen that displays force in standard or metric units
- Foam-lined tray and foam compression block support and protect curved paddles
- Analog readout easily legible from multiple viewpoints
- Maximum force reading memory
- 1-button reset

If you want to read more about this device or other mammography accessoires, take a look at [our partner's website!](#)

## Model MA5034 - Portable Blue / Green Sensitometer - Sun Nuclear

For day to day processor quality control, the Gammex MA5034 Portable Blue / Green Sensitometer provides a versatile, reliable, and highly accurate test. Sensitometry is the single most effective way to test the processor operation and consistency.

With its 21 step light modulator, a full range of densities can be tested with a single piece of film. It can be used with a wide range of films

### **Portable Blue / Green Sensitometer features:**

- versatile, reliable, and highly accurate testing device
- can test either blue sensitive or green sensitive film
- easy to expose the film, simply close the cover and listen for the tone
- battery powered
- compact design



## Model 330 - Digital kV, Dose and Time Meter - Sun Nuclear

The Gammex 330 Digital kV, Dose and Time Meter is a test device for quality control and acceptance testing in radiographic, mammographic and fluoroscopic x-ray systems.

### Digital kV, Dose and Time Meter features:

- includes digital display of the quantity PPV (practical peak voltage) according to IEC 61676
- compact and light-weight
- easy-to-read LC Display
- measures kVp, dose and time non-invasively
- touch key controls



## Partner **Polimaster**



Polimaster is a global provider of radiation monitoring solutions, offering advanced dosimetry and detection technologies tailored for the medical field. Their instruments assist healthcare professionals in maintaining safety and compliance in environments where radiation exposure is a concern.

### Product offering

#### RadFlash® Electronic Personal Dosimeter



[← Back to partner](#)

Nuclear Medicine › Detectors

## RadFlash® Electronic Personal Dosimeter



## Partner **Other**

### Product offering

**SPA38 - Sodium  
Iodide Detector  
Assembly**



## SPA38 - Sodium Iodide Detector Assembly

The SPA assembly, when used with our UCS30 spectrometer, offers everything required to set up a scintillation station for counting or identifying radioactive samples. The assembly includes our SDA sodium iodide detector, a lead shield, a 10 position sample stand, sample tray, and high voltage and signal cables.

The detector stand is manufactured from a rugged plastic and has 10 sample tray positions placed 1 cm apart for convenience.

The sample tray has a 1 inch diameter indentation which keeps the sample secure and centered directly under the NaI(Tl) detector. This is perfect for our holding our exempt quantity radioactive sources.

