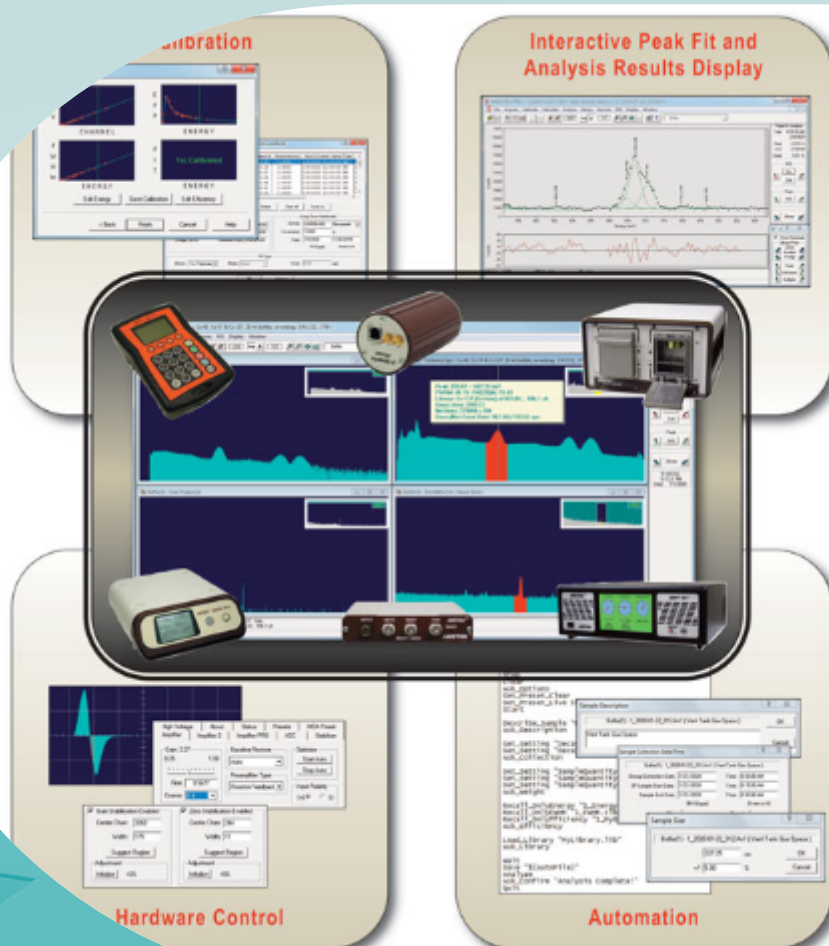


# LOGICIEL



# Table of contents

<b>Bertin Technologies</b> .....	<b>3</b>
Dataexpert Software Solution – Saphymo .....	4
<b>Tracerco</b> .....	<b>4</b>
Dosimeter software DoseVision™ and DoseVision™ Tracerco .....	6
<b>Sun Nuclear Corporation</b> .....	<b>6</b>
GRID VIEW® – CIRS .....	8
3DVH Software for Patient QA – Sun Nuclear .....	10
<b>Ashland</b> .....	<b>10</b>
FilmQA Pro™ Software version 7 – Ashland .....	12

## Partner **Bertin Technologies**



Bertin Technologies is a global provider of advanced radiation detection and environmental monitoring solutions, specializing in handheld monitors, personal electronic dosimeters, environmental monitoring systems, and waste & recycling management technologies. Their instruments are designed to meet the rigorous demands of nuclear facilities, emergency response teams, and environmental agencies.

---

### Product offering

#### Dataexpert Software Solution - Saphymo



## Dataexpert Software Solution - Saphymo



DataEXPERT software is a solution you can use to collect, manage, chart and evaluate data measured by sensors from Bertin Instruments for example. DataEXPERT is a very user-friendly solution that offers a powerful web-based interface available, not only on computers and laptops, but also for mobile use on tablets and smartphones.

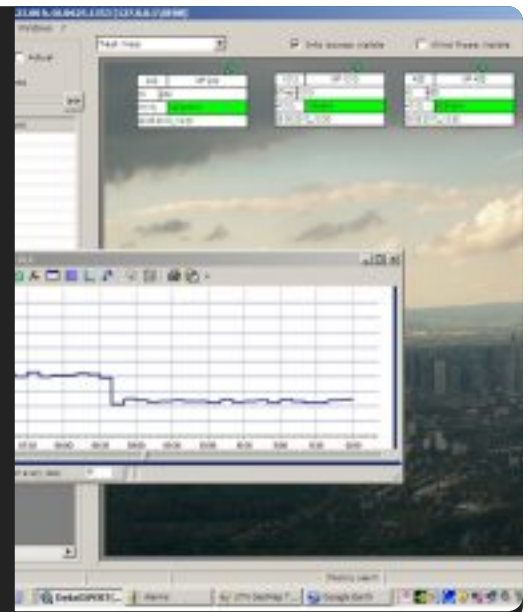
The software shows the data in charts or tables, and with static or dynamic GIS map layers, so the data is easy to analyse. DataEXPERT eases the system management because it shows all technical and radiological events of the connected probes. The users have access to the system overview, and they can also adjust all instruments parameters with remote setup functions.

You can combine this software perfectly with [Bertin's GammaTRACER](#) probes for example.

### DATAEXPERT SOFTWARE BENEFITS

- Can also import and display data from DVD-files (older data can be imported)
- Select data from different tools or measurement series in the database and display it
- Use alarm, zoom, display, mathematics and report functions
- Easily exportable data to Excel or SQL databases
- Use a display module like GEOMAP or Google Earth
- User friendly
- Compatible with Windows

Do you want to read more about the possibilities, visit [our partner's website!](#)



## Partner **Tracerco**



Tracerco is a trusted global provider of radiation monitoring solutions, offering specialized instruments for contamination monitoring, dose rate measurement, and personal dosimetry. Their technologies are widely adopted in the medical field, supporting hospitals, radiology departments, and nuclear medicine facilities in maintaining safety and meeting regulatory standards.

### Product offering

#### Dosimeter software DoseVision™ and DoseVision™ Tracerco



## Dosimeter software DoseVision™ and DoseVision™ Tracerco

The dosimeter PC software interface for the PED-IS PED Blue and PED+ is specifically designed for simplicity and interactivity. DoseVision™ allows users to set alarms and reports. This is to assign users to the PED, and download and analyze data.



### advantages of DoseVision:

- cumulative dose rate data analysis
- peak dose rates
- data export and easily generate reports
- password protection
- software and firmware updates available for free
- easy management of PED users
- GPS data logging using the PED+

### advantages of DoseVision Live™ :

- Bluetooth connectivity
- live dose rate data
- management control for up to 7 devices
- live status updates

DoseVision Live dosimeter software Tracerco

## Partner **Sun Nuclear Corporation**



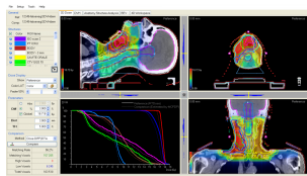
Sun Nuclear is a leading provider of comprehensive Quality Management solutions for radiation therapy and diagnostic imaging. Their portfolio encompasses positioning systems, dosimetry tools, QA phantoms, detectors, dose rate monitoring devices, analysis software, and training phantoms. These solutions are designed to support medical professionals in ensuring accurate, safe, and efficient patient care.

### Product offering

#### GRID VIEW® - CIRS



#### 3DVH Software for Patient QA - Sun Nuclear



## GRID VIEW ® - CIRS

CIRS developed GRID-VIEW for mammography. It specifically addresses inadequacies in the post operative handling of surgical breast biopsy specimens and multiple core biopsy specimens.

The unique design and radio-opaque grid, provide an efficient system for imaging, transporting and identifying breast biopsies.



The product is available in three grid patterns and can be purchased as a carton of 12 units, or as a case of 12 cartons (144 units).

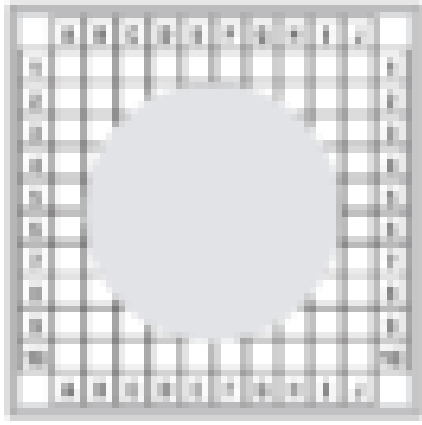
### GRID-VIEW BENEFITS

- Reduces surgery time through improved imaging turnaround.
- Improves communication between surgery, radiology and pathology.
- Eliminates physical handling of specimens in radiology.
- Eliminates the need for needles or wires.
- Reduces risk of exposure to blood-borne pathogens.

If you want to know more about this product, take a look at [our partner's website](#).

Or... [contact PEO!](#)





8

## 3DVH Software for Patient QA - Sun Nuclear

3DVH Software transforms the field of per-patient dose QA by generating clinically-relevant and intuitive analyses of complex IMRT and VMAT plans. With proven accuracy, 3DVH estimates the 3D dose to the patient-specific geometry.

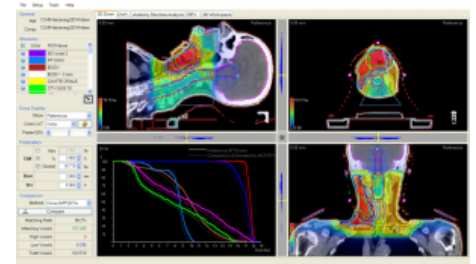
### 3DVH Software features:

- fast results with automated tools – Quick Stat Templates,
- quick Dose Profiles, DICOM compliant workflow
- no forward dose calculation into the patient CT
- no commissioning
- uses existing measurements and devices
- with optional Respiratory MotionSim module, analyze the dosimetric impact of a moving target
- transform 2D measurements to 3D dose volume for advanced analysis
- perform 3D dose and DVH QA analysis on patient – not phantom – geometry
- supports coplanar and non-coplanar beams
- identify TPS and beam delivery errors
- intuitive and familiar presentation of dose and DVH with statistics per anatomical structure

### 3DVH Software compatibility:

- hardware: ArcCHECK, MapCHECK 2
- software: SNC Patien, EPIDose
- rotational therapy: RapidArc, VMAT
- static gantry: IMRT
- treatment planning systems: Pinnacle, Eclipse, and most TPS systems that can export DICOM data
- FFF & non-FFF deliveries

Read more about 3DVH Software on the [Sun Nuclear website](#)



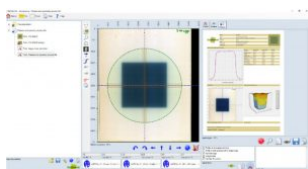
## Partner **Ashland**



Ashland is a global leader in specialty materials, offering innovative solutions that enhance safety, precision, and patient outcomes across various medical disciplines. Their portfolio supports healthcare providers in radiation therapy, diagnostic imaging, wound care, and regenerative medicine.

### Product offering

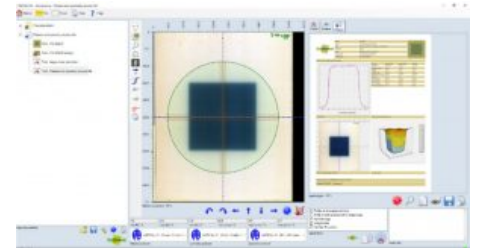
#### **FilmQA Pro™ Software version 7 - Ashland**



## FilmQA Pro™ Software version 7 - Ashland

### a sophisticated, quantitative analysis tool for Gafchromic™ Film

FilmQA Pro™ software is a sophisticated, quantitative analysis tool specifically designed to simplify and streamline the intensity-modulated radiation therapy quality assurance (IMRT QA). Our software is also effective for QA of SRS, SBRT and VMAT procedures. It allows you to scan or open images of exposed film and calculate the optimized dose maps.



FilmQA Pro™ software uses proprietary multi-channel dosimetry which eliminates or mitigates film and scanner artifacts by detecting whether errors are being made during scanning. In addition,, the software also has the one-scan analysis feature which combines calibration and plan verification in a single scan. The one-scan protocol requires only the patient film, a reference patch, and an unexposed patch. This protocol eliminates error sources such as interscan variability, which enables you to reduce errors to within 2 percent.

With FilmQA Pro™ software, you can get your results in minutes, post-exposure growth no longer is an issue and there is no waiting overnight for changes in the film to diminish. You can do an analysis any time you want, even at a moment's notice. The software delivers gamma passing rates  $\geq 95$  percent at 2 percent at 2 mm instead of using 3 percent at 3 mm.

### key features and benefits

- lateral scan correction: apply a correction to compensation for lateral artifacts that can show in the scan
- new user friendly interface with a quick start menu
- one-scan protocol: fast and efficient method to achieve dose accuracy within 2%
- triple-channel dosimetry: use three color channels to optimize accuracy of dose calculations
- accurately calibrate: an entire lot with just four strips of film using our film-specific mathematical function
- quick-start screen: easily access the module you need at start-up
- dose error recognition: ability to identify accuracy of delivered dose
- superior resolution: get 100 percent of the picture from millions of measurements instead of just 0.1 percent
- no angular dependence: shoot the film from all angles, an entire plan on a single Gafchromic™ film, and validate the plan in the same way that the patient receives it

*FilmQA Pro™ Software carries a CE Mark*